

One Hundred Years, We Focus On The WPC

## COOWIN GROUP

Qingdao Barefoot Construction Material Co., Ltd

Chengyang District, Qingdao City,

Shandong Province, China, 266108

[www.coowinmall.com](http://www.coowinmall.com)

Tel: +0086-532-67731461

Fax: +0086-532-67731463

24-hours hotline: 0086-189-54248234



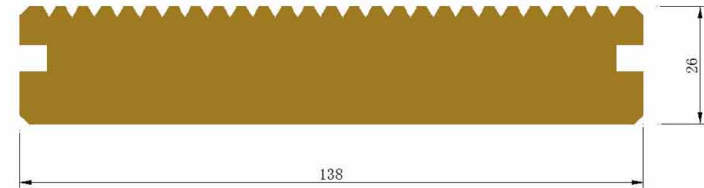
---

WPC DECKING FLOOR

---



## WPC DECKING FLOOR TW-K02



**Article No:** TW-K02  
**Width:** 138mm  
**Thickness:** 26mm



## Design

Solid outdoor decking model TW-K02 takes T-groove design of 26 small grooves in the front while sanding, embossing, brushing surface in the back. stable characteristics. With excellent skid resistance, you can choose the side according to personal preference.



# Product Show



# TW-K02



[Click here for video](#)





# Product Profile



## Surface

Groove, Sanding, Brush, Embossing, 3D embossing.



Groove



Mountain shape  
(Natural wood grain)



Fish shape  
(Natural wood grain)



Wave shape  
(Natural wood grain)



Brush



Sanding



Cluster shape  
(Natural wood grain)



Modern  
(3D Embossed)

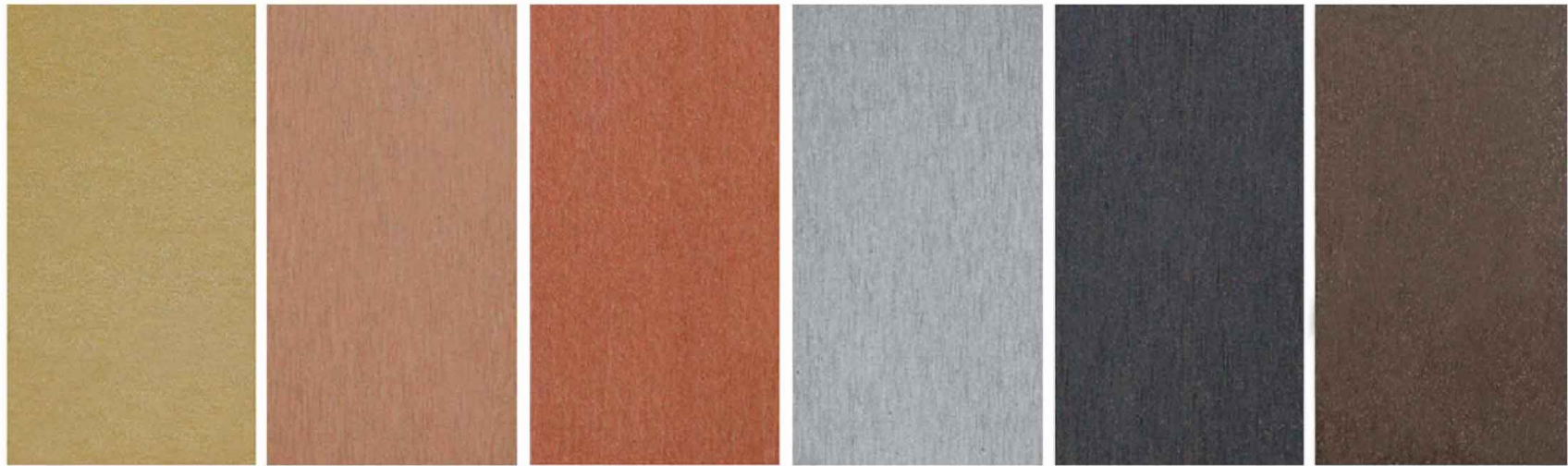


Classical  
(3D Embossed)



## Color

There are 6 popular colors for your choose, and we can also customized the color according to your request.



Cedar

Red pine

Red wood

Light gray

Blue gray

Coffee



## Art Color



Cedar



Red pine



Red wood



Light gray



Red Brown

# Installation & Instruction



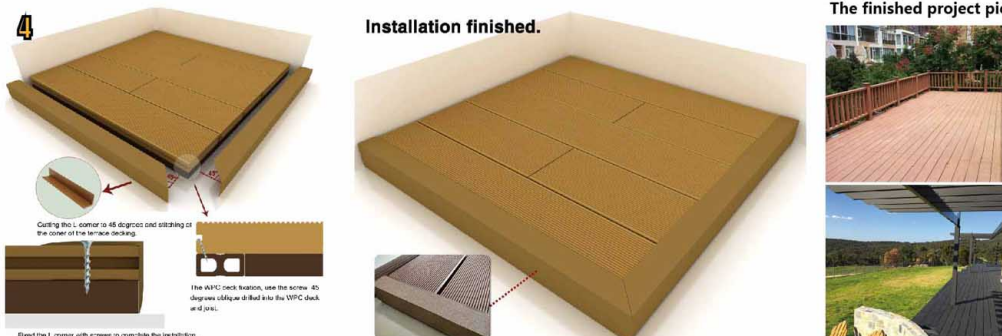
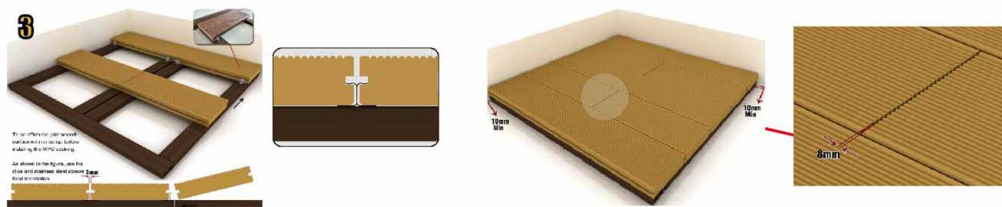
Courtyard projects



## Tools & Accessories



**Fixed joist**  
When installation, the WPC decking must be perpendicular to the joist.



Installation finished.

The finished project pictures

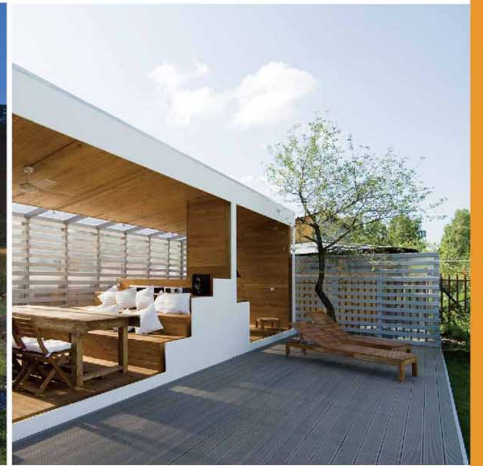


## Summary

- 1 Put two deck boards abreast;
- 2 Put long bar tie plate upright under the boards, put one bar every 25-35cm (According to the plank which be selected)
- 3 Then put one fixing stud, and between two board's channel;
- 4 Last put one screw in the fixing stud, and then screw down fast. Making fixing stud and tie plate connection fast.



# Projects Show





# Packaging & Shipping



COOWIN wpc product will go through a strict packaging process before delivery to reduce the unnecessary loss of goods during transport process. The package including

1. Fixed by stretch film,
2. Carton packaging,
3. Covered with plywood,
4. Waterproof packing,
5. packaged with a fixed package belt

And we will add gasbags in the inside space when loading to prevent the internal force of the container on the impact of goods, all of above methods have only one purpose, to ensure products safe and timely delivery to customers in the hands.





## About **COOWIN**

Coowin Group (hereinafter referred to as Coowin) was established in 2000 and the headquarters is located in Qingdao, China. Owing independent high technology manufacturing factory and sales service company, Coowin is one of the leaders in wood plastic industry. Coowin has engaged in WPC materials producing, R&D, selling and developing potential market demands for many years. Coowin's products has been exported to more than 80 countries worldwide and has received broad customers' recognition in both production quality and our service.

Coowin's main production as follows: outdoor WPC decking floor, outdoor WPC wall cladding, outdoor handrail, outdoor pergola, WPC pallet, WPC park bench/chair, WPC flower box and other decorative material used in outdoor fields. Besides above, also accept customized production according to customer's personal demands.

As China's first batch of wood plastic material manufactures also R&D leaders, Coowin has passed the national environmental protection inspection every year since 2010. Meanwhile Coowin has invested heavily in WPC technology innovation, production equipment updating and environmental pollution control system.

One Hundred Years, We Focus On The WPC

### **COOWIN GROUP**

Qingdao Barefoot Construction Material Co., Ltd  
Chengyang District, Qingdao City,  
Shandong Province, China, 266108

[www.coowinmall.com](http://www.coowinmall.com)

Tel: +0086-532-67731461

Fax: +0086-532-67731463

24-hours hotline: 0086-189-54248234

